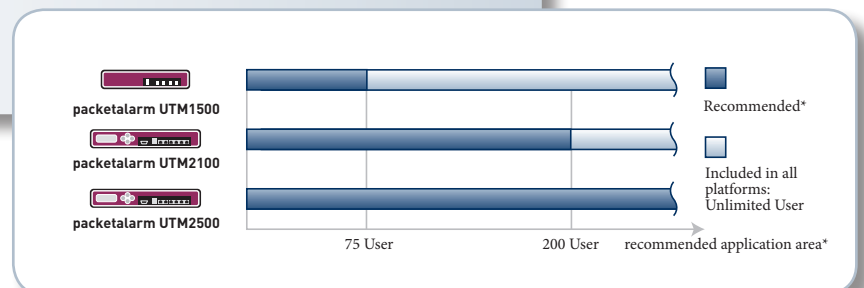
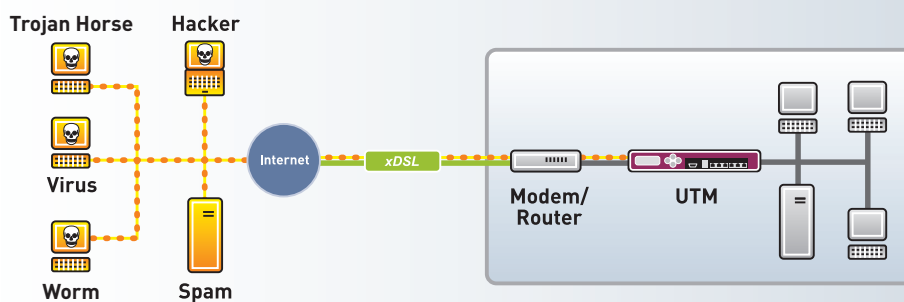


## Application Sheet

# Professional Network Protection – with Unified Threat Management

Threats caused by hacker attacks and viruses are becoming increasingly complex. Productivity losses caused by spamming are continuously increasing. Virus scanners, firewalls, spam filters, and many other solutions can be applied to protect sensitive data and networks. The effort required to install all these systems and to administer them, however, is extremely high. Would it not be better to find a single, cost-effective system which protects your network in a centralized and efficient manner against these dangers?



### Solution:

\* The recommended application area depends on network and system configurations. The here used values are guide values.

In addition to firewalls, VPNs, and virus scanners, the packetalarm Unified Threat Management systems (UTM) combine a multitude of further security systems on one platform. All systems are optimally attuned to each other and work hand in glove. It is therefore not necessary to maintain different systems of various vendors, but only one – the savings of cost and time are tremendous. Threats are already detected and blocked before they reach the network.

### Benefits / Highlights:

- ▶ Cost-effective, all-embracing, and centralized network security solution on a single system
- ▶ Attacks and threats are already blocked at the gateway.
- ▶ Simple and centralized management of all security functions by means of an easy-to-survey, Web-based administration interface
- ▶ Increase of the network security by means of integrated intrusion prevention and anti-virus technology
- ▶ Centralized spam detection already at the gateway
- ▶ Optional content filter upgrade
- ▶ Automatic security updates ensure that the system is kept state-of-the-art at all times.

# Application Sheet

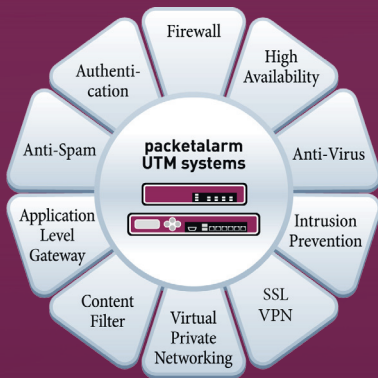
## Professional Network Protection – with Unified Threat Management



### PROJECT-REFERENCES:

- ▶ Uni Dresden, Section Geodesy, UTM 1500

### UTM SYSTEMS:



#### packetalarm UTM Series

Unified threat management systems for the protection of the complete LAN. The UTM systems of Teldat detect even the most diverse attacks and threats in real-time and block hazards in a targeted manner.

#### Features:

- ▶ Integrated multi-inspection firewall with application level gateway
- ▶ Integrated basic virus protection
- ▶ Integrated heuristic basic spam protection (optionally)

Commtouch RPD as upgrade with a spam detection rate of more than 97% spam detection rate)

- ▶ Integrated intrusion prevention technology as a protection against burglary attempts and attacks on

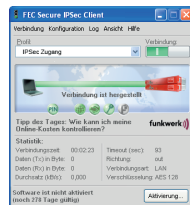
the network with currently more than 6,000 attack signatures

- ▶ Integrated VPN function (IPSec, PPTP, L2TP)
- ▶ Automatic security and software update



Model	packetalarm UTM1500	packetalarm UTM2100	packetalarm UTM2500
Art. no.	5510000015	5510000016	5510000017
Ethernet Interfaces	4x 10/100 Mbps	6x 10/100 Mbps	6x 10/100/1000 Mbps
Recommended for Networks with Number of Users	25 – 75	100 – 200	> 250
Spam quarantine	Spam quarantine zone for each postbox		

### SOFTWARE:



#### IPSec Client

- ▶ Universal IPSec client software
- ▶ High security level attained for the end device by means of the integrated firewall function
- ▶ Secure dial-in when used within public hot spots

Software	IPSec Client		
	1 License	5 Licenses	10 Licenses
Art. no.	80511	80512	80513

### ADDITIONAL LICENSES:

#### CommTouch AntiSpam



#### Cobion Content Filter



### SUPPLEMENTARY COMPONENTS:



#### Multimedia Fax Gateway and Router

- ▶ CAPI server virtualisation + fax G3
- ▶ VoIP and fax over IP (T.38)
- ▶ 19-inch housing with integrated power supply
- ▶ 10 (opt. up to 110) VPN tunnels

with IPSec, PPTP, support of certificates

- ▶ Hardware acceleration
- ▶ Configuration Interface with integrated assistants
- ▶ QoS, OSPF

Fax Media Gateways / Router	bintec RT1202	bintec RT3002	bintec RT4402	bintec R3002	bintec R3802
ISDN BRI and FXS	2 x BRI	4 x BRI	2 x BRI + 2 x PRI	1 x BRI	1 x BRI
DSP	4 channels	8 channels	60 channels	–	–
Ethernet Switch	5 x Gigabit Ethernet	5 x Gigabit Ethernet	5 x Gigabit Ethernet	5 x Gigabit Ethernet	5 x Gigabit Ethernet
Fax over IP (T.38) / Fax G3 (T.30)	4 / 4	8 / 8	30 (opt.) / 30 (opt.)	– / –	– / –
DSL	–	ADSL2(+)	–	ADSL2(+)	SHDSL, 8-wire, IMA

Teldat GmbH  
Suedwestpark 94  
D-90449 Nuremberg  
Phone: +49 - 911 - 96 73-0  
Fax: +49 - 911 - 6 88 07 25  
e-mail: info@teldat.de  
Internet: www.teldat.de